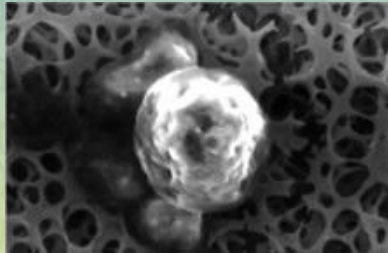


**Before Cell-Wall is Cracked**



**After Cell-Wall is Cracked**  
(20,000 times magnification)

It is important to crack the cell-wall of the Chlorella open in such a way as to not destroy its nutritional content, yet make it more readily available. Our Organic Patented Process is the Most Effective, opening 99.9% of the Chlorella cell-wall, allowing our Chlorella to have over 80% bioavailability of its nutrients which is the highest of any Chlorella on the market.

**12 Tablets (3 gr.)/day costs less than \$13.00/month**



A Characteristic composition of standard *Chlorella pyrenoidosa* :

**General Analysis :**

Protein	64.1 %
Carbohydrate	11.8 %
Fat	13.7 %
Fiber	7.5 %
Ash	7.2 %
Calories	427 kcal (1,788Kj)

**Vitamins and Minerals :**

Carotene	106 mg	Niacin	29.2 mg
β carotene	95.9 mg	Calcium	680 mg
Vitamin B1	1.8 mg	Iodine	<500 μg
Vitamin B2	4.8 mg	Iron	142 mg
Vitamin B5	4.6 mg	Copper	3.1 mg
Vitamin B6	1.9 mg	Phosphorus	1.63 mg
Vitamin B12	830 μg	Potassium	904 mg
Vitamin C	49.5 mg	Magnesium	348 mg
Vitamin E	18.7 mg	Zinc	7.6 mg
Biotin	264 μg	Selenium	8 μg
Folic Acid	1.3 mg		
Inositol	133 mg		

**Amino Acids :**

Essentials		Non-essentials	
Arginine	3.55 %	Alanine	4.82 %
Phenylalanine	2.90 %	Aspartic acid	5.35 %
Histidine	1.25 %	Cystine	0.75 %
Isoleucine	2.38 %	Glutamic acid	6.71 %
Leucine	5.05 %	Glycine	3.58 %
Lysine	3.46 %	Proline	2.87 %
Methionine	1.49 %	Serine	2.42 %
Threonine	2.90 %	Tyrosine	2.16 %
Tryptophan	1.18 %		
Valine	3.60 %		

Chlorophyll	2890 mg
Lutein	263 mg
Nucleic Acid	4.24 g
Superoxide Scavenging Activity	39000 unit/100 g

(as certified by the Japanese Food Research Laboratories)

**Phone: 1-877-680-6109**

**www.greenmanna.com**

*Disclaimer: The information in this brochure is for educational purposes only. Consult your health professional for diagnosis and treatment.*



**GreenManna**



**-Cell Chlorella**

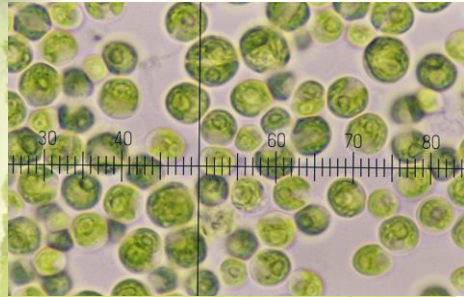
**Nature's Perfect Food**

**#1 Health Food sold in Japan-outselling vitamin C**



# GreenManna

## Chlorella Pyrenoidosa



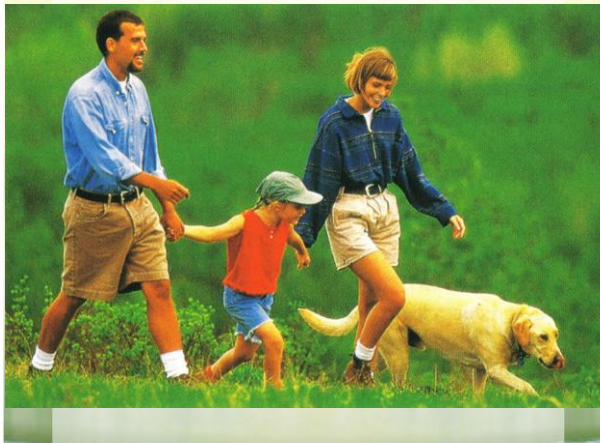
**Live Chlorella Cells**

Chlorella is a single-cell fresh water algae that is about the size of a red blood cell. We use Chlorella Pyrenoidosa, referred to as the "King" of Chlorella" since it has the **Highest Chlorella Growth Factor "CGF"** of the 10 different Chlorella varieties available.

**GreenManna Chlorella activates the production of T-Cells, B-Cells, Interferon and Macrophages**

## Highest Nutrient Food on the Planet

In addition to being the *Most Complete Nutritious Whole Food* available, GreenManna Chlorella has **more of the following nutrients than any other food:** Calcium, Iron, Potassium, Beta-Carotene, Magnesium, Vitamins B1, B2, B3, B6, E, Manganese, Choline, Lutein, RNA and DNA, 100% RDA for B12, and is the Highest Vegetarian source of B5 and Zinc.



**Highest Chlorophyll Food**  
**Highest Protein Food 64%**

## Tested and Certified by the Japan Food Research Laboratories



**Lab Analysis**

The Japanese Government has the highest standards in the world for testing and certifying the purity of Chlorella. Chlorella manufacturers are not able to sell their product in Japan without first passing the Japanese Governments' strict protocol for high nutrient content and lack of heavy metals.

**GreenManna Chlorella causes the friendly bacteria in the stomach to multiply at 4 times the normal rate**